

Pull handles biopolymer

Item description/product images



Description

Material:

Biopolymer wood fibre reinforced, natural beech.
Biopolymer fibreglass reinforced, black grey.
Bush stainless steel 1.4305.

Version:

Natural beech with wood fibre optic or coloured black grey.

Note:

Good mechanical strength (tested to a minimum of 2x safety factor).
Good chemical resistance.
Suitable for outdoor use (weather resistant).

This pull handle is characterised by its large size and pleasant haptics.

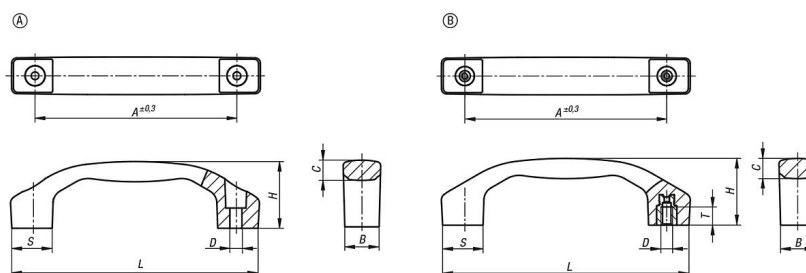
Assembly:

Form A from the front.
Form B from the rear.

Advantages:

This biopolymer is manufactured entirely from renewable raw materials (oil free).
Good CO₂ impact compared to petroleum-based plastics.
Conservation of finite fossil resources.
The wood fibres originate 100% from local, sustainably managed forests in Germany.
Biopolymer is suitable for recycling (comparable to thermoplastics).

Drawings



Overview of items

Pull handles biopolymer

Order No.	Form	Main colour	Component material	A	B	C	D	H	L	S	T	Load capacity N
K1060.101100052143	A	natural beech	-	100	17	9,5	6	33	122	20	-	1000
K1060.101120062143	A	natural beech	-	120	21	11,4	7	39	146	24	-	1000
K1060.101140082143	A	natural beech	-	140	24	14,2	9	45	170	28	-	1000
K1060.10110005290	A	black grey RAL 7021	-	100	17	9,5	6	33	122	20	-	1000
K1060.10112006290	A	black grey RAL 7021	-	120	21	11,4	7	39	146	24	-	1000
K1060.10114008290	A	black grey RAL 7021	-	140	24	14,2	9	45	170	28	-	1000
K1060.102100052143	B	natural beech	stainless steel	100	17	9,5	M5	33	122	20	9	1000
K1060.102120062143	B	natural beech	stainless steel	120	21	11,4	M6	39	146	24	12	1000
K1060.102140082143	B	natural beech	stainless steel	140	24	14,2	M8	45	170	28	12	1000

Pull handles biopolymer

Overview of items

Order No.	Form	Main colour	Component material	A	B	C	D	H	L	S	T	Load capacity N
K1060.10210005290	B	black grey RAL 7021	stainless steel	100	17	9,5	M5	33	122	20	9	1000
K1060.10212006290	B	black grey RAL 7021	stainless steel	120	21	11,4	M6	39	146	24	12	1000
K1060.10214008290	B	black grey RAL 7021	stainless steel	140	24	14,2	M8	45	170	28	12	1000