

Magnets shallow pot

Item description/product images



Description

Material:

Housing, steel.
Magnetic core AlNiCo.

Version:

Housing painted red.

Note:

Shielded system. Shallow pot magnets are used in fixtures with minimal space.

Temperature range:

max. 450°C.

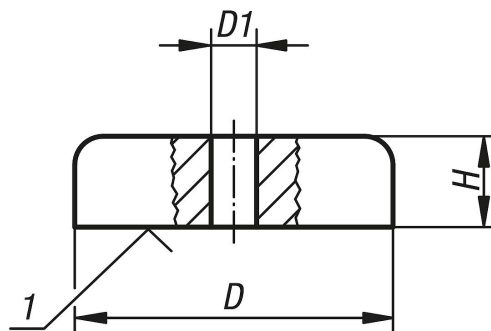
On request:

Other colours.

Drawing reference:

1) magnetic face

Drawings



Overview of items

Magnets shallow pot

| Order No. | D | D1 | H | Magnetic force N |
|-----------|----|-----|------|------------------|
| K0558.01 | 19 | 3,5 | 8 | 30 |
| K0558.02 | 29 | 5 | 9 | 55 |
| K0558.03 | 38 | 5 | 10,5 | 95 |