

## Hinges stainless steel, separable, dismantlable

### Item description/product images



### Description

#### Product description:

Hinges for panel elements and aluminium profiles.

The hinge pins can be removed and refitted without tools enabling the hinge halves to be quickly separated and rejoined.

These hinges find use on hatches, covers and frames

Can be used indoors or outdoors.

#### Material:

Stainless steel 1.4401.

Hinge pin and accessories stainless steel 1.4305.

#### Version:

Hinges polished.

Hinge pin bright.

Accessories bright.

#### Note:

The loading values given for the hinges are non-binding reference values without consideration of safety factors and exclude any liability. The values given are for information purposes only and do not constitute a legally binding assurance of properties.

The load values have been determined under laboratory conditions. Each user must determine individually whether the hinge is suitable for the respective application.

Different materials attached to the hinge and the type of attachment used, meteorological conditions and wear can effect the calculated values.

#### Advantages:

Tool-free mounting and removal

#### On request:

Unequal leaf length combinations.

#### Supplied with:

Two hinge halves.

Selected hinge pin and/or accessories.

#### Accessory:

K0776 Locking pins with folding latch.

Pins with head ISO 2341.

Locking pins with key ring.

K1136 Cotter pin DIN EN ISO 1234.

K0367 Key ring.

#### Drawing reference:

Form A: with locking pin

Form B: with pin/head and key ring

Form C: with pin/head and cotter pin

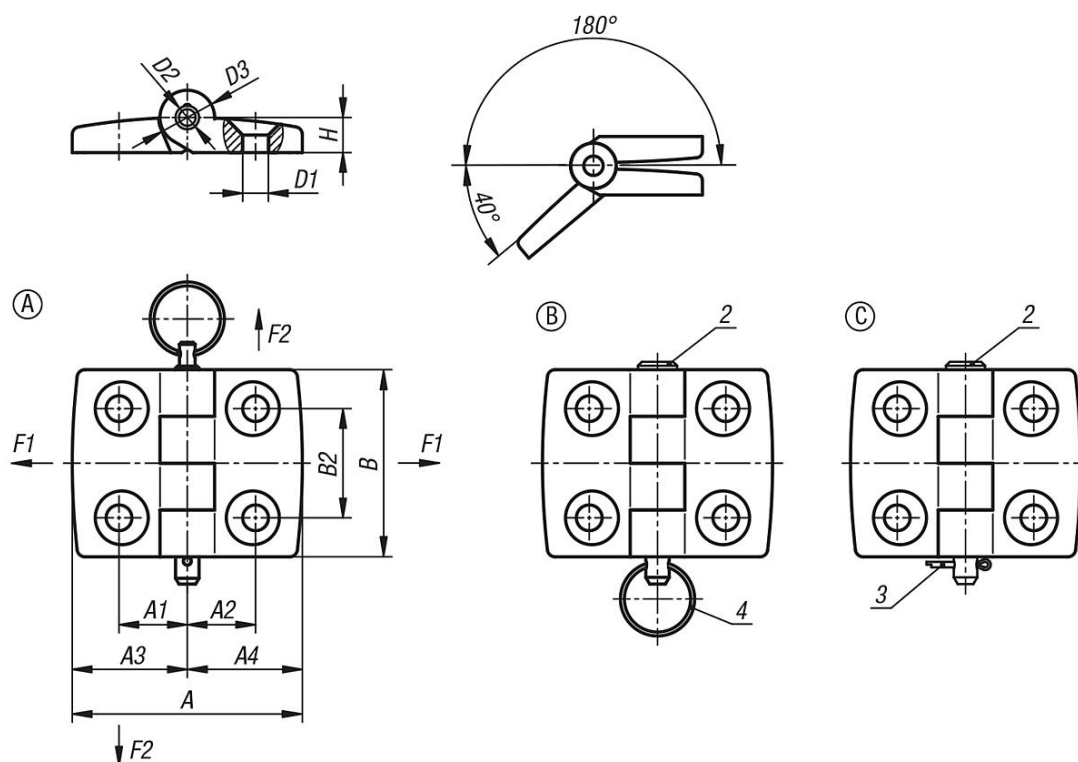
2) Hinge pin

3) Cotter pin

4) Key ring

## Hinges stainless steel, separable, dismantlable

### Drawings



### Overview of items

#### Hinges stainless steel, separable, dismantlable

Order No.	Form	Form definition	A	A1	A2	A3	A4	B	B2	D1	D2	D3	H	F1 N	F2 N
K1964.26151501	A	-	52	15	15	26	26	48	28	6,6	6	14	9	700	560
K1964.30181801	A	-	59	17,5	17,5	29,5	29,5	48	28	6,6	6	14	9	800	575
K1964.40232301	A	-	77	22,5	22,5	38,5	38,5	48	28	6,6	6	14	9	900	675
K1964.45252501	A	-	85	25	25	42,5	42,5	48	28	6,6	6	14	9	900	675
K1964.60333301	A	-	113	32,5	32,5	56,5	56,5	48	28	6,6	6	14	9	900	260
K1964.26151502	B	-	52	15	15	26	26	48	28	6,6	6	14	9	700	560
K1964.30181802	B	-	59	17,5	17,5	29,5	29,5	48	28	6,6	6	14	9	800	575
K1964.40232302	B	-	77	22,5	22,5	38,5	38,5	48	28	6,6	6	14	9	900	675
K1964.45252502	B	-	85	25	25	42,5	42,5	48	28	6,6	6	14	9	900	675
K1964.60333302	B	-	113	32,5	32,5	56,5	56,5	48	28	6,6	6	14	9	900	260
K1964.26151503	C	-	52	15	15	26	26	48	28	6,6	6	14	9	700	560
K1964.30181803	C	-	59	17,5	17,5	29,5	29,5	48	28	6,6	6	14	9	800	575
K1964.40232303	C	-	77	22,5	22,5	38,5	38,5	48	28	6,6	6	14	9	900	675
K1964.45252503	C	-	85	25	25	42,5	42,5	48	28	6,6	6	14	9	900	675
K1964.60333303	C	-	113	32,5	32,5	56,5	56,5	48	28	6,6	6	14	9	900	260