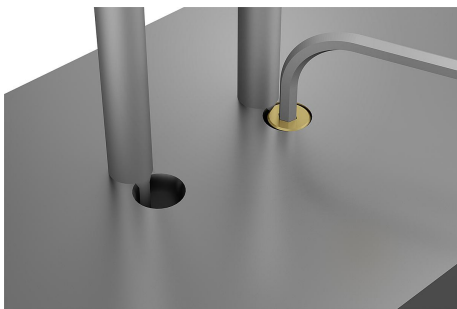
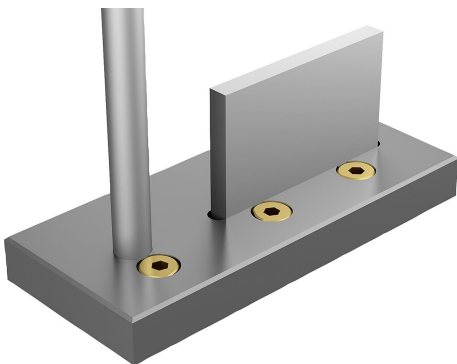
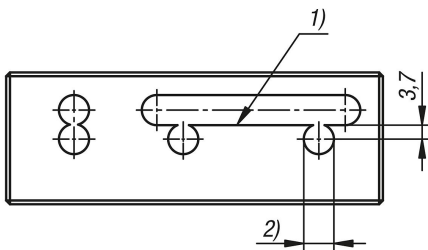


## Clamp cam brass

### Item description/product images



### Description

#### Material:

Brass.

#### Application:

These clamping cams are used to fixate components in workpieces. The clamped components can be easily and quickly released again. Workpieces and components can be accurately positioned in an assembly.

#### Advantages:

Using the cam clamps often saves the need for complex cross holes for clamping screws.

The bore for the clamping cam can be produced cost-effectively in the same machine set-up as the bore or slot for the component to be clamped.

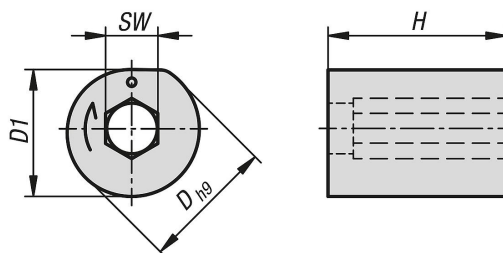
#### Functional principle:

Insert the component to be clamped and the clamping cam into the workpiece. The indent mark on the clamp cam top face should be adjacent the part to be clamped. The clamp cam is rotated with an hex key in the direction of the arrow. The part can be released again by turning the cam in the opposite direction.

#### Drawing reference:

- 1) Clamping edge
- 2) 8 H9 min. depth 8

### Drawings



## Clamp cam brass

### Overview of items

---

#### Clamp cam brass

Order No.	D	D1	H	SW
K1457.0808	8	7,5	8	3