

## Hinge halves aluminium, on-frame

### Item description/product images



### Description

**Material:**  
Aluminium.

**Version:**  
anodised.

**Note:**  
hinge halves for panel elements and aluminium profiles.  
Hinge halves can be individually combined.  
360° rotation.

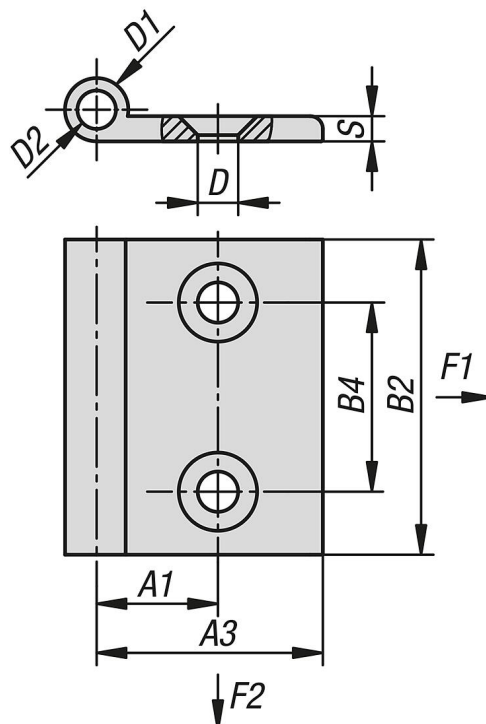
Fastened using DIN 7991 / ISO 10642 countersunk screws.

The loading values given for the hinges are non-binding reference values without consideration of safety factors and exclude any liability. The values given are for information purposes only and do not constitute a legally binding assurance of properties.

These load values were determined under laboratory conditions. Each user must determine individually whether the hinge is suitable for the respective application. Different materials onto which the hinges are installed and the type of mounting, weather conditions and wear can influence the determined values.

**Accessory:**  
Pin K2104.  
End cap K2105.

### Drawings



## Hinge halves aluminium, on-frame

### Overview of items

#### Hinge halves, aluminium, on-frame

Order No.	A1	A3	B2	B4	D	D1	D2	S	No. of holes	F1 N	F2 N
K2103.18502	10,5	18	50	30	5,3	10	6,1	4	2	100	150
K2103.23502	12,9	23,4	50	30	6,4	10	6,1	4	2	100	150
K2103.28502	15,2	27,7	50	30	6,4	10	6,1	4	2	100	150
K2103.36502	19,25	35,8	50	30	6,4	10	6,1	4	2	100	150
K2103.38502	20,2	37,7	50	30	6,4	10	6,1	4	2	100	150
K2103.43502	22,7	42,7	50	30	6,4	10	6,1	4	2	100	150
K2103.48502	25,2	47,7	50	30	6,4	10	6,1	4	2	100	150
K2103.58502	30,2	57,7	50	30	6,4	10	6,1	4	2	100	150