

Mounting bracket, steel, for telescopic slides

Item description/product images



Description

Material:
Mounting bracket steel.

Version:
Mounting bracket electro zinc-plated.

Note for ordering:
Sold in pairs.

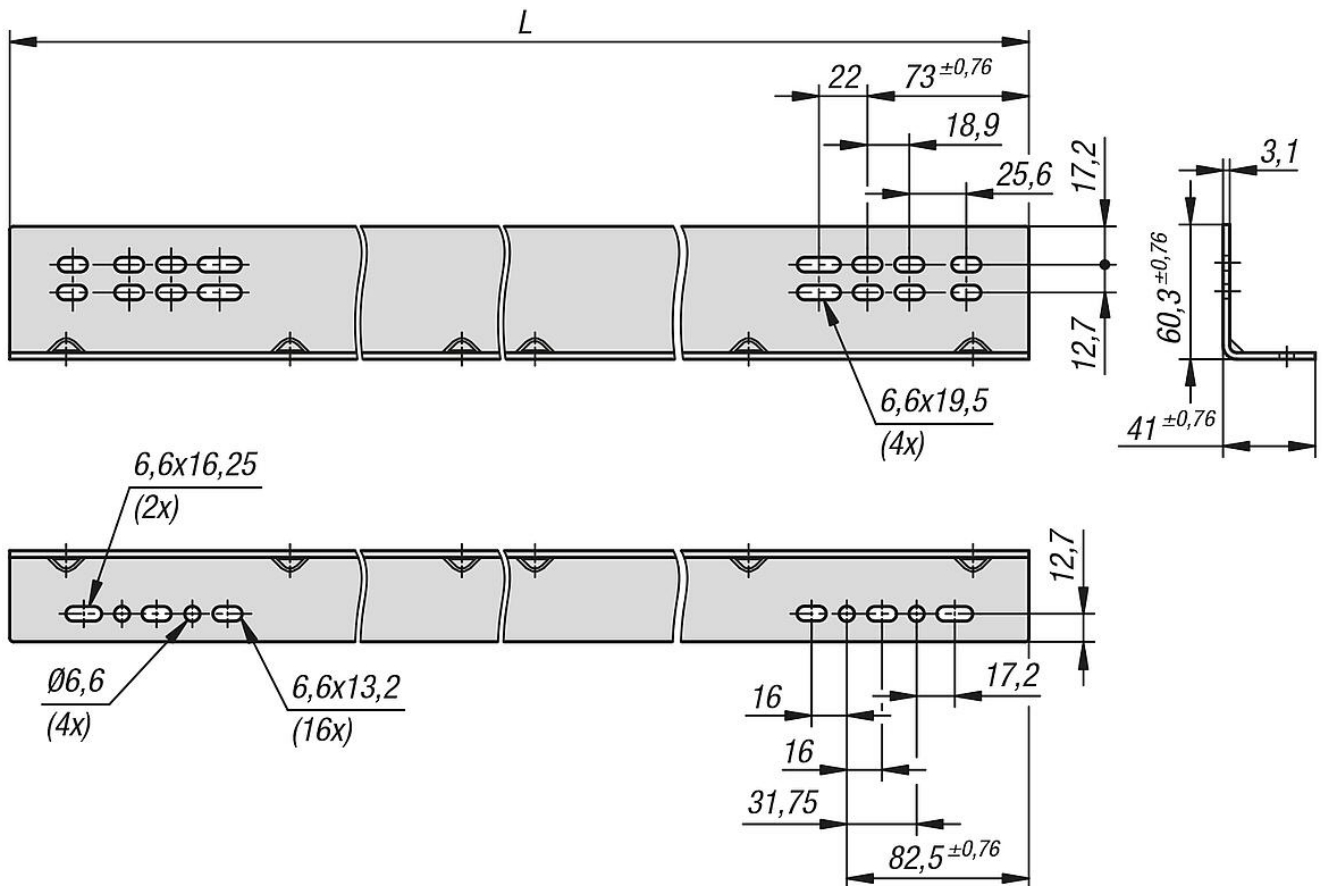
Note:
As an option for floor or side mounting.

Accessory:
K1720 Steel telescopic slides for side mounting, full extension, load capacity up to 272 kg.

K1719 Steel telescopic slides for side mounting, full extension, load capacity up to 272 kg.

K1717 Steel telescopic slides for side mounting, full extension, load capacity up to 160 kg.

Drawings



Mounting bracket, steel, for telescopic slides

Overview of items

Mounting bracket, steel, for telescopic slides

Order No.	L	Packaging type
K2093.0305	305	1 piece = 1 pair
K2093.0406	406	1 piece = 1 pair
K2093.0559	559	1 piece = 1 pair
K2093.0711	711	1 piece = 1 pair