

Clamping bolt flexible

Item description/product images



Description

Material:

Body aluminium.
Clamping face steel.

Version:

Body blue anodised.
Clamping face hardened and black oxidised.

Note:

The clamping bolts are a flexible clamping system for secure and powerful clamping of workpieces with regular and irregular outer contours.

The clamping bolts can be mounted on a machine table with T-slots or directly in a tapped hole. The clamping bolts serve simultaneously as a support and stop.

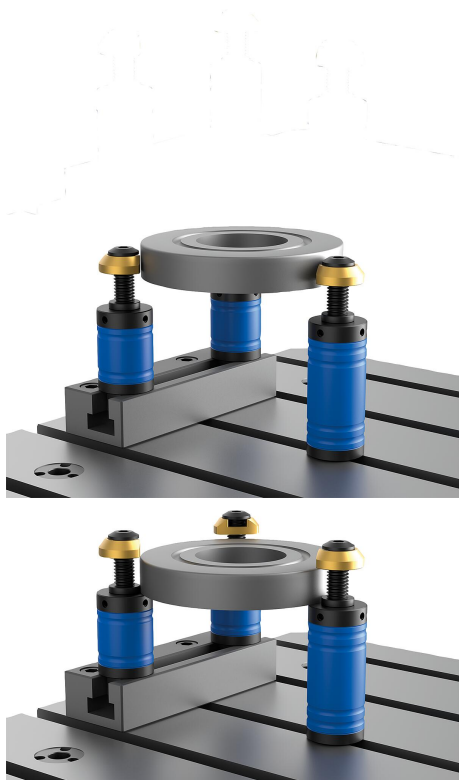
The clamping bolts are available with heights of 50 and 80 mm. The clamping range is 5 - 25 mm. By using extensions, the clamping range can be increased to 20 - 40 mm or 40 - 60 mm. The brass clamping ring prevents marks on the workpiece.

Please order the clamping screw and extension separately.

Assembly:

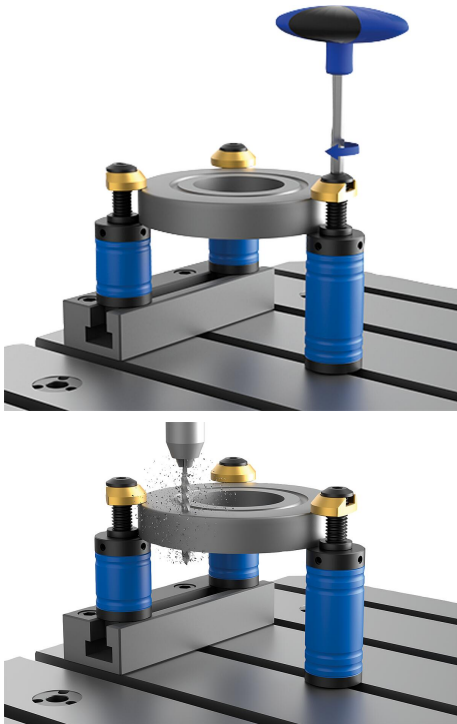
The positioning and fastening of the clamping bolt is carried out via the central screw.

Position the clamping bolt (without clamping screw) on the machine table. Then tighten the screw in the centre using a hex key. The clamping screw, which is then inserted from above, clamps the workpiece securely and effectively.

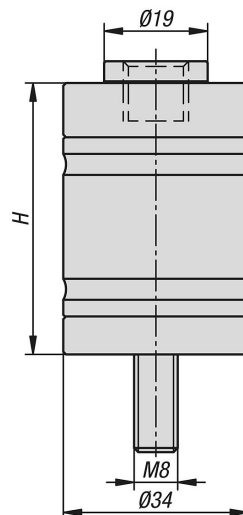


Clamping bolt flexible

Item description/product images



Drawings



Overview of items

Clamping bolt flexible

Order No.	H	Clamp range
K2068.050	50	5-25 (20-40/40-60)
K2068.080	80	5-25 (20-40/40-60)

