

Pull handle, oval aluminium, oblique

Item description/product images



Description

Product description:

These slanted pull handles are particularly suitable for mounting in places where space is limited. These handles are very strong and robust and can also be used where robust handling is required.

Material:

Aluminium EN AW-6063

Version:

Black or traffic red RAL 3020 powder-coated or bright.

Note:

The bright version can be painted or coated after assembly.

Application:

Where space is limited in machine and plant construction, toolmaking, furniture industry, rehabilitation and medical technology

Assembly:

From the rear.

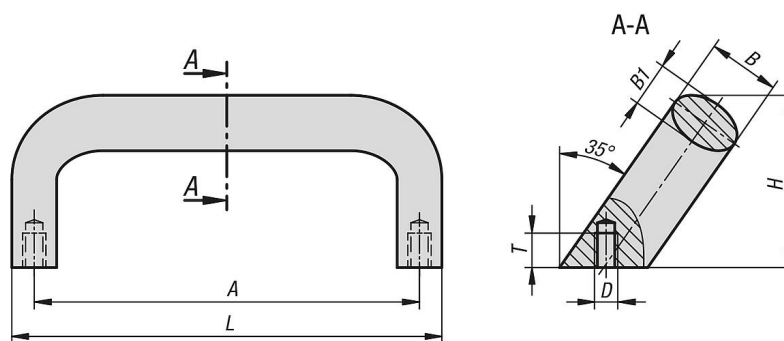
Advantages:

Good access where space is limited.

Very stable and robust.

Retaining element for opening and closing covers, panels and hoods.

Drawings



Overview of items

Pull handles aluminium, oval, slanted

Order No.	Main colour	Surface finish body	A	B	B1	D	H	L	T	Load capacity N
K1634.1000106	black	powder-coated	100	21	13	M6	50	113	10	1000
K1634.1120106	black	powder-coated	112	21	13	M6	50	125	10	1000
K1634.1200106	black	powder-coated	120	21	13	M6	50	133	10	1000
K1634.1280106	black	powder-coated	128	21	13	M6	50	141	10	1000
K1634.1600106	black	powder-coated	160	21	13	M6	50	173	10	1000
K1634.1120108	black	powder-coated	112	25	17	M8	55	129	12	1000
K1634.1200108	black	powder-coated	120	25	17	M8	55	137	12	1000

Pull handle, oval aluminium, oblique

Overview of items

Order No.	Main colour	Surface finish body	A	B	B1	D	H	L	T	Load capacity N
K1634.1280108	black	powder-coated	128	25	17	M8	55	145	12	1000
K1634.1600108	black	powder-coated	160	25	17	M8	55	177	12	1000
K1634.1800108	black	powder-coated	180	25	17	M8	55	197	12	1000
K1634.1008406	traffic red RAL 3020	powder-coated	100	21	13	M6	50	113	10	1000
K1634.1128406	traffic red RAL 3020	powder-coated	112	21	13	M6	50	125	10	1000
K1634.1208406	traffic red RAL 3020	powder-coated	120	21	13	M6	50	133	10	1000
K1634.1288406	traffic red RAL 3020	powder-coated	128	21	13	M6	50	141	10	1000
K1634.1608406	traffic red RAL 3020	powder-coated	160	21	13	M6	50	173	10	1000
K1634.1128408	traffic red RAL 3020	powder-coated	112	25	17	M8	55	129	12	1000
K1634.1208408	traffic red RAL 3020	powder-coated	120	25	17	M8	55	137	12	1000
K1634.1288408	traffic red RAL 3020	powder-coated	128	25	17	M8	55	145	12	1000
K1634.1608408	traffic red RAL 3020	powder-coated	160	25	17	M8	55	177	12	1000
K1634.1808408	traffic red RAL 3020	powder-coated	180	25	17	M8	55	197	12	1000
K1634.10006	-	bright	100	21	13	M6	50	113	10	1000
K1634.11206	-	bright	112	21	13	M6	50	125	10	1000
K1634.12006	-	bright	120	21	13	M6	50	133	10	1000
K1634.12806	-	bright	128	21	13	M6	50	141	10	1000
K1634.16006	-	bright	160	21	13	M6	50	173	10	1000
K1634.11208	-	bright	112	25	17	M8	55	129	12	1000
K1634.12008	-	bright	120	25	17	M8	55	137	12	1000
K1634.12808	-	bright	128	25	17	M8	55	145	12	1000
K1634.16008	-	bright	160	25	17	M8	55	177	12	1000
K1634.18008	-	bright	180	25	17	M8	55	197	12	1000