

## Ball lock pins, steel or stainless steel, with thread

### Item description/product images



### Description

#### Material:

Housing and push button steel.  
Ball, spring and snap ring stainless steel.  
O-ring FKM.

#### Version:

Housing nickel-plated.  
Knob tempered and nickel-plated.  
Ball tempered.

#### Note:

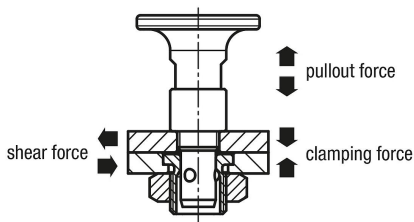
Installation dimensions for Form A for plate thickness 6 mm.  
Installation dimensions for Form B for plate thickness 6 to 16 mm.

#### Attention:

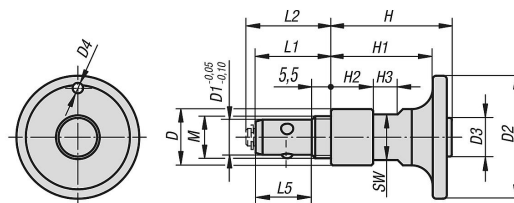
The specified pullout forces only apply in conjunction with locating bush K1065.

#### Accessory:

Locating bush K1065.

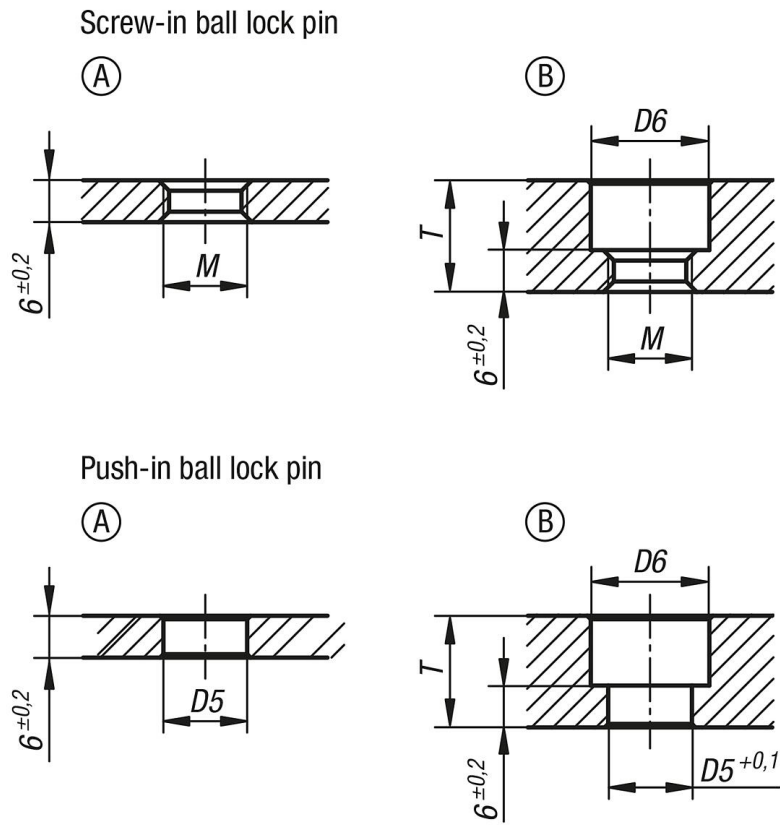


### Drawings



# Ball lock pins, steel or stainless steel, with thread

## Drawings



## Overview of items

### Ball lock pin

Order No.	D	D1	D2	D3	D4	M	L1	L2	L5	H	H1	H2	H3	SW	D5	D6	T max.	Clamping force N	Shearing force kN	Pullout force kN	Temperature resistance
K1063.621	12	6	25	8	-	M8	19	21	13,5	22,2	18	6	5,5	10	8	13	10	30	3	0,5	≤180 °C
K1063.1024	16	10	35	11	3	M12x1,5	21,5	23,5	16	34,4	29	12	7	13	12	17	16	50	9	1,5	≤180 °C