

Jaw pins

Item description/product images



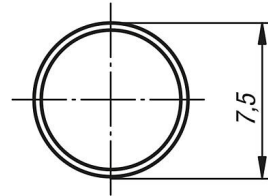
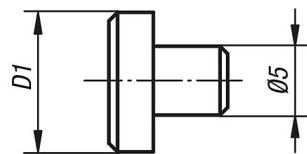
Description

Material:
Tool steel.

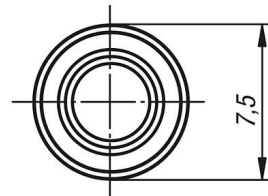
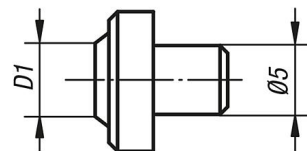
Version:
Hardened.

Drawings

flattened



cup point



Overview of items

Jaw pins

Order No.	Version 1	D1	Application
K0946.05000	flattened	7,5	material over 1000 N/mm ² tensile strength
K0946.05400	cup point	4	material up to ca. 1000 N/mm ² tensile strength
K0946.05600	cup point	6	material up to ca. 1000 N/mm ² tensile strength