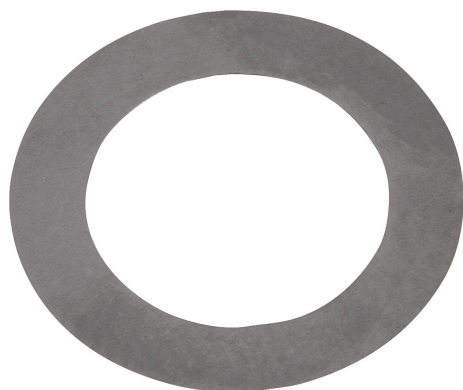


Shim washers DIN 988

Item description/product images



Description

Material:

Steel.
Stainless steel A2.

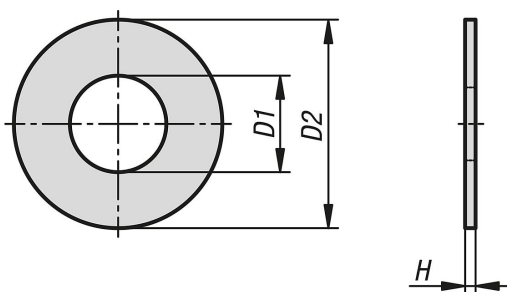
Version:

Bright.

Note:

With shim washers, an existing axial backlash can be significantly reduced. They are available with a thicknesses from 0.1 mm. Any thicknesses can be made by combining several shim washers.

Drawings



Overview of items

Shim washers DIN 988

Order No.	Main material	D1	D2	H
K1151.0306010	steel	3	6	0,1
K1151.0306015	steel	3	6	0,15
K1151.0306020	steel	3	6	0,2
K1151.0306025	steel	3	6	0,25
K1151.0306030	steel	3	6	0,3
K1151.0306050	steel	3	6	0,5
K1151.0306100	steel	3	6	1
K1151.0408010	steel	4	8	0,1
K1151.0408015	steel	4	8	0,15
K1151.0408020	steel	4	8	0,2
K1151.0408030	steel	4	8	0,3
K1151.0408050	steel	4	8	0,5
K1151.0408100	steel	4	8	1
K1151.0510010	steel	5	10	0,1
K1151.0510015	steel	5	10	0,15
K1151.0510020	steel	5	10	0,2
K1151.0510025	steel	5	10	0,25
K1151.0510030	steel	5	10	0,3
K1151.0510050	steel	5	10	0,5
K1151.0510100	steel	5	10	1
K1151.0612010	steel	6	12	0,1
K1151.0612020	steel	6	12	0,2
K1151.0612025	steel	6	12	0,25
K1151.0612030	steel	6	12	0,3
K1151.0612050	steel	6	12	0,5

Shim washers DIN 988

Overview of items

Order No.	Main material	D1	D2	H
K1151.0612100	steel	6	12	1
K1151.0713010	steel	7	13	0,1
K1151.0713020	steel	7	13	0,2
K1151.0713030	steel	7	13	0,3
K1151.0713050	steel	7	13	0,5
K1151.0713100	steel	7	13	1
K1151.0814010	steel	8	14	0,1
K1151.0814015	steel	8	14	0,15
K1151.0814020	steel	8	14	0,2
K1151.0814025	steel	8	14	0,25
K1151.0814030	steel	8	14	0,3
K1151.0814050	steel	8	14	0,5
K1151.0814100	steel	8	14	1
K1151.0915010	steel	9	15	0,1
K1151.0915015	steel	9	15	0,15
K1151.0915020	steel	9	15	0,2
K1151.0915030	steel	9	15	0,3
K1151.0915050	steel	9	15	0,5
K1151.0915100	steel	9	15	1
K1151.1016010	steel	10	16	0,1
K1151.1016015	steel	10	16	0,15
K1151.1016020	steel	10	16	0,2
K1151.1016025	steel	10	16	0,25
K1151.1016030	steel	10	16	0,3
K1151.1016050	steel	10	16	0,5
K1151.1016100	steel	10	16	1
K1151.1117010	steel	11	17	0,1
K1151.1117020	steel	11	17	0,2
K1151.1117025	steel	11	17	0,25
K1151.1117030	steel	11	17	0,3
K1151.1117050	steel	11	17	0,5
K1151.1117100	steel	11	17	1
K1151.1218010	steel	12	18	0,1
K1151.1218015	steel	12	18	0,15
K1151.1218020	steel	12	18	0,2
K1151.1218025	steel	12	18	0,25
K1151.1218030	steel	12	18	0,3
K1151.1218050	steel	12	18	0,5
K1151.1218100	steel	12	18	1
K1151.1319010	steel	13	19	0,1
K1151.1319015	steel	13	19	0,15
K1151.1319020	steel	13	19	0,2
K1151.1319025	steel	13	19	0,25
K1151.1319030	steel	13	19	0,3
K1151.1319050	steel	13	19	0,5
K1151.1319100	steel	13	19	1
K1151.1420010	steel	14	20	0,1
K1151.1420015	steel	14	20	0,15
K1151.1420020	steel	14	20	0,2
K1151.1420025	steel	14	20	0,25
K1151.1420030	steel	14	20	0,3
K1151.1420050	steel	14	20	0,5
K1151.1420100	steel	14	20	1
K1151.1521010	steel	15	21	0,1
K1151.1521015	steel	15	21	0,15
K1151.1521020	steel	15	21	0,2
K1151.1521025	steel	15	21	0,25
K1151.1521030	steel	15	21	0,3
K1151.1521050	steel	15	21	0,5
K1151.1521100	steel	15	21	1
K1151.1521120	steel	15	21	1,2
K1151.1622015	steel	16	22	0,15

Overview of items

Order No.	Main material	D1	D2	H
K1151.1622020	steel	16	22	0,2
K1151.1622025	steel	16	22	0,25
K1151.1622030	steel	16	22	0,3
K1151.1622050	steel	16	22	0,5
K1151.1622100	steel	16	22	1
K1151.1622120	steel	16	22	1,2
K1151.1724010	steel	17	24	0,1
K1151.1724015	steel	17	24	0,15
K1151.1724020	steel	17	24	0,2
K1151.1724025	steel	17	24	0,25
K1151.1724030	steel	17	24	0,3
K1151.1724050	steel	17	24	0,5
K1151.1724100	steel	17	24	1
K1151.1724120	steel	17	24	1,2
K1151.1825010	steel	18	25	0,1
K1151.1825015	steel	18	25	0,15
K1151.1825020	steel	18	25	0,2
K1151.1825025	steel	18	25	0,25
K1151.1825030	steel	18	25	0,3
K1151.1825050	steel	18	25	0,5
K1151.1825100	steel	18	25	1
K1151.1825120	steel	18	25	1,2
K1151.1926010	steel	19	26	0,1
K1151.1926015	steel	19	26	0,15
K1151.1926020	steel	19	26	0,2
K1151.1926025	steel	19	26	0,25
K1151.1926030	steel	19	26	0,3
K1151.1926050	steel	19	26	0,5
K1151.1926100	steel	19	26	1
K1151.1926120	steel	19	26	1,2
K1151.2028010	steel	20	28	0,1
K1151.2028015	steel	20	28	0,15
K1151.2028020	steel	20	28	0,2
K1151.2028025	steel	20	28	0,25
K1151.2028030	steel	20	28	0,3
K1151.2028050	steel	20	28	0,5
K1151.2028100	steel	20	28	1
K1151.2028120	steel	20	28	1,2
K1151.2028150	steel	20	28	1,5
K1151.2230010	steel	22	30	0,1
K1151.2230015	steel	22	30	0,15
K1151.2230020	steel	22	30	0,2
K1151.2230025	steel	22	30	0,25
K1151.2230030	steel	22	30	0,3
K1151.2230050	steel	22	30	0,5
K1151.2230100	steel	22	30	1
K1151.2230120	steel	22	30	1,2
K1151.2230150	steel	22	30	1,5
K1151.2535010	steel	25	35	0,1
K1151.2535015	steel	25	35	0,15
K1151.2535020	steel	25	35	0,2
K1151.2535025	steel	25	35	0,25
K1151.2535030	steel	25	35	0,3
K1151.2535050	steel	25	35	0,5
K1151.2535100	steel	25	35	1
K1151.2535120	steel	25	35	1,2
K1151.2535150	steel	25	35	1,5
K1151.2637010	steel	26	37	0,1
K1151.2637015	steel	26	37	0,15
K1151.2637020	steel	26	37	0,2
K1151.2637025	steel	26	37	0,25
K1151.2637030	steel	26	37	0,3

Overview of items

Order No.	Main material	D1	D2	H
K1151.2637050	steel	26	37	0,5
K1151.2637100	steel	26	37	1
K1151.2637120	steel	26	37	1,2
K1151.2637150	steel	26	37	1,5
K1151.2840010	steel	28	40	0,1
K1151.2840015	steel	28	40	0,15
K1151.2840020	steel	28	40	0,2
K1151.2840025	steel	28	40	0,25
K1151.2840030	steel	28	40	0,3
K1151.2840050	steel	28	40	0,5
K1151.2840100	steel	28	40	1
K1151.2840120	steel	28	40	1,2
K1151.2840150	steel	28	40	1,5
K1151.3042010	steel	30	42	0,1
K1151.3042015	steel	30	42	0,15
K1151.3042020	steel	30	42	0,2
K1151.3042025	steel	30	42	0,25
K1151.3042030	steel	30	42	0,3
K1151.3042050	steel	30	42	0,5
K1151.3042100	steel	30	42	1
K1151.3042120	steel	30	42	1,2
K1151.3042150	steel	30	42	1,5
K1151.3042200	steel	30	42	2
K1151.3245010	steel	32	45	0,1
K1151.3245015	steel	32	45	0,15
K1151.3245020	steel	32	45	0,2
K1151.3245025	steel	32	45	0,25
K1151.3245030	steel	32	45	0,3
K1151.3245050	steel	32	45	0,5
K1151.3245100	steel	32	45	1
K1151.3245120	steel	32	45	1,2
K1151.3245150	steel	32	45	1,5
K1151.3245200	steel	32	45	2
K1151.3545010	steel	35	45	0,1
K1151.3545015	steel	35	45	0,15
K1151.3545020	steel	35	45	0,2
K1151.3545025	steel	35	45	0,25
K1151.3545030	steel	35	45	0,3
K1151.3545050	steel	35	45	0,5
K1151.3545100	steel	35	45	1
K1151.3545120	steel	35	45	1,2
K1151.3545150	steel	35	45	1,5
K1151.3545200	steel	35	45	2
K1151.3645010	steel	36	45	0,1
K1151.3645015	steel	36	45	0,15
K1151.3645020	steel	36	45	0,2
K1151.3645025	steel	36	45	0,25
K1151.3645030	steel	36	45	0,3
K1151.3645050	steel	36	45	0,5
K1151.3645100	steel	36	45	1
K1151.3645120	steel	36	45	1,2
K1151.3645150	steel	36	45	1,5
K1151.3645200	steel	36	45	2
K1151.3747010	steel	37	47	0,1
K1151.3747015	steel	37	47	0,15
K1151.3747020	steel	37	47	0,2
K1151.3747025	steel	37	47	0,25
K1151.3747030	steel	37	47	0,3
K1151.3747050	steel	37	47	0,5
K1151.3747100	steel	37	47	1
K1151.3747120	steel	37	47	1,2
K1151.3747150	steel	37	47	1,5

Overview of items

Order No.	Main material	D1	D2	H
K1151.3747200	steel	37	47	2
K1151.4050010	steel	40	50	0,1
K1151.4050015	steel	40	50	0,15
K1151.4050020	steel	40	50	0,2
K1151.4050025	steel	40	50	0,25
K1151.4050030	steel	40	50	0,3
K1151.4050050	steel	40	50	0,5
K1151.4050100	steel	40	50	1
K1151.4050120	steel	40	50	1,2
K1151.4050150	steel	40	50	1,5
K1151.4050200	steel	40	50	2
K1151.4252010	steel	42	52	0,1
K1151.4252015	steel	42	52	0,15
K1151.4252020	steel	42	52	0,2
K1151.4252025	steel	42	52	0,25
K1151.4252030	steel	42	52	0,3
K1151.4252050	steel	42	52	0,5
K1151.4252100	steel	42	52	1
K1151.4252120	steel	42	52	1,2
K1151.4252150	steel	42	52	1,5
K1151.4252200	steel	42	52	2
K1151.4555010	steel	45	55	0,1
K1151.4555015	steel	45	55	0,15
K1151.4555020	steel	45	55	0,2
K1151.4555025	steel	45	55	0,25
K1151.4555030	steel	45	55	0,3
K1151.4555050	steel	45	55	0,5
K1151.4555100	steel	45	55	1
K1151.4555120	steel	45	55	1,2
K1151.4555150	steel	45	55	1,5
K1151.4555200	steel	45	55	2
K1151.4860010	steel	48	60	0,1
K1151.4860015	steel	48	60	0,15
K1151.4860020	steel	48	60	0,2
K1151.4860025	steel	48	60	0,25
K1151.4860030	steel	48	60	0,3
K1151.4860050	steel	48	60	0,5
K1151.4860100	steel	48	60	1
K1151.4860120	steel	48	60	1,2
K1151.4860150	steel	48	60	1,5
K1151.4860200	steel	48	60	2
K1151.5062010	steel	50	62	0,1
K1151.5062015	steel	50	62	0,15
K1151.5062020	steel	50	62	0,2
K1151.5062025	steel	50	62	0,25
K1151.5062030	steel	50	62	0,3
K1151.5062050	steel	50	62	0,5
K1151.5062100	steel	50	62	1
K1151.5062120	steel	50	62	1,2
K1151.5062150	steel	50	62	1,5
K1151.5062200	steel	50	62	2
K1151.10408020	stainless steel A2	4	8	0,2
K1151.10408030	stainless steel A2	4	8	0,3
K1151.10408050	stainless steel A2	4	8	0,5
K1151.10408100	stainless steel A2	4	8	1
K1151.10510020	stainless steel A2	5	10	0,2
K1151.10510030	stainless steel A2	5	10	0,3
K1151.10510050	stainless steel A2	5	10	0,5
K1151.10510100	stainless steel A2	5	10	1
K1151.10612020	stainless steel A2	6	12	0,2
K1151.10612100	stainless steel A2	6	12	1
K1151.10814050	stainless steel A2	8	14	0,5

Overview of items

Order No.	Main material	D1	D2	H
K1151.10814100	stainless steel A2	8	14	1
K1151.10915100	stainless steel A2	9	15	1
K1151.11016010	stainless steel A2	10	16	0,1
K1151.11016020	stainless steel A2	10	16	0,2
K1151.11016050	stainless steel A2	10	16	0,5
K1151.11016100	stainless steel A2	10	16	1
K1151.11218010	stainless steel A2	12	18	0,1
K1151.11218030	stainless steel A2	12	18	0,3
K1151.11218050	stainless steel A2	12	18	0,5
K1151.11319020	stainless steel A2	13	19	0,2
K1151.11420050	stainless steel A2	14	20	0,5
K1151.11420100	stainless steel A2	14	20	1
K1151.11521050	stainless steel A2	15	21	0,5
K1151.11622020	stainless steel A2	16	22	0,2
K1151.11622030	stainless steel A2	16	22	0,3
K1151.11622100	stainless steel A2	16	22	1
K1151.11825100	stainless steel A2	18	25	1
K1151.12028010	stainless steel A2	20	28	0,1
K1151.12028050	stainless steel A2	20	28	0,5
K1151.12028100	stainless steel A2	20	28	1
K1151.12535100	stainless steel A2	25	35	1
K1151.13042050	stainless steel A2	30	42	0,5
K1151.13042100	stainless steel A2	30	42	1
K1151.13545030	stainless steel A2	35	45	0,3
K1151.14050050	stainless steel A2	40	50	0,5
K1151.14050100	stainless steel A2	40	50	1