

# Mushroom knobs biopolymer internal thread

## Item description/product images



## Description

### Material:

Biopolymer wood fibre reinforced, natural beech.  
Biopolymer fibreglass reinforced, black grey.  
Bush stainless steel 1.4305.

### Version:

Natural beech with wood fibre optic or coloured black grey.  
Bush bright stainless steel.

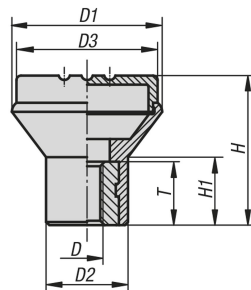
### Note:

Good mechanical strength (tested to a minimum of 2x safety factor).  
Good chemical resistance.  
Suitable for outdoor use (weather resistant).

### Advantages:

This biopolymer is manufactured entirely from renewable raw materials (oil free).  
Good CO<sub>2</sub> impact compared to petroleum-based plastics.  
Conservation of finite fossil resources.  
The wood fibres originate 100% from local, sustainably managed forests in Germany.  
Biopolymer is suitable for recycling (comparable to thermoplastics).

## Drawings



## Overview of items

Order No.	Main colour	Size	D	D1	D2	D3	H	H1	T
K0251.10005143	natural beech	1	M5	21	12	19	21	10	10
K0251.10006143	natural beech	2	M6	25	14	23	25	12	10
K0251.10008143	natural beech	3	M8	33	18	31	33	15	14
K0251.1000590	black grey RAL 7021	1	M5	21	12	19	21	10	10
K0251.1000690	black grey RAL 7021	2	M6	25	14	23	25	12	10
K0251.1000890	black grey RAL 7021	3	M8	33	18	31	33	15	14