

Quarter-turn locks lockable, stainless steel

Item description/product images



Description

Material:

Quarter-turn lock 1.4401 stainless steel.
Tongue 1.4301 stainless steel.

Version:

Bright.

Note:

The quarter turn lock can be installed pre-assembled. Housing with fastening nut and plate cylinder, same key locking, incl. 2 keys (lock type 1333).

Please order required tongue version separately. Every tongue can be combined with every housing.

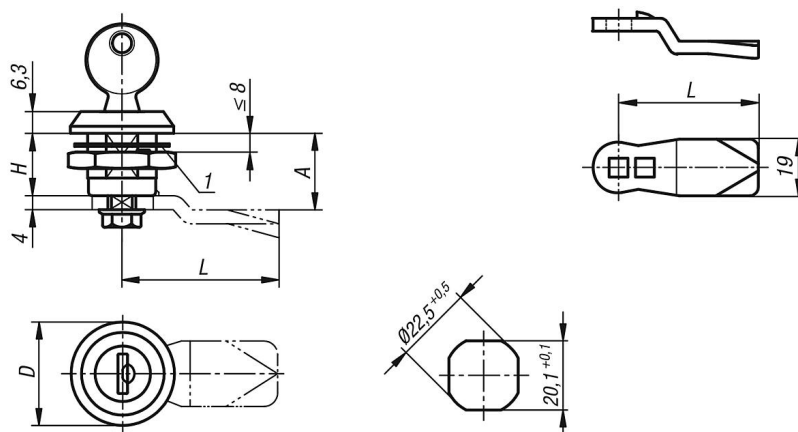
Accessory:

Tongue for stainless steel quarter-turn lock K1340.

Drawing reference:

1) flat seal

Drawings



Overview of items

Quarter-turn lock, lockable, stainless steel

Order No.	Actuation	D	H
K1355.18	key single-key system	30	18

Tongue for quarter-turn lock

Order No.	A	L
K1340.45060	6	45
K1340.45080	8	45
K1340.45100	10	45
K1340.45140	14	45
K1340.45160	16	45

Quarter-turn locks lockable, stainless steel**Overview of items**

Order No.	A	L
K1340.45180	18	45
K1340.45200	20	45
K1340.45220	22	45
K1340.45240	24	45
K1340.45260	26	45
K1340.45280	28	45
K1340.45320	32	45
K1340.45500	50	45