

# Technical information

## Quick clamping - reliable fastening



### Durable and reliable

Now even more durable, more user-friendly and safer. This is the design aim that has been achieved in the new generation. You, the user, will notice the difference immediately: On first contact, the new toggle clamp has a good grip and is robust. It delivers fast, reliable and safe operation. High quality material ensures the necessary holding power.



### Advantages:

#### Impressively stable:

All models can easily withstand 300,000 clamping cycles

#### Durable:

High-quality bushings - without scoring

#### Extremely robust:

Corrosion-resistant NITROX COATING or stainless steel

#### Simple design

The fixed top nut eases spindle adjustment

#### Reliable:

Uniform force during opening and closing

#### Ideal where space is restricted:

Slim design supports safe operation

#### Optimum stability:

Conical clamping arm with U-profile

#### Safe application:

Nothing catches on the smooth edges

#### Fast and flexible:

Easy retrofitting thanks to a wide range of accessories

#### Ergonomic and slip-resistant:

Easy to operate when wearing work gloves

#### Non-reflecting

The NITROX-SURFACE is ideal for use with laser devices

#### Safe when opening:

More space between clamping arm and grip prevents pinching

#### Extremely compatible:

Oblong holes allows assembly on existing holes

### Secure fixation and locking with safety lock:

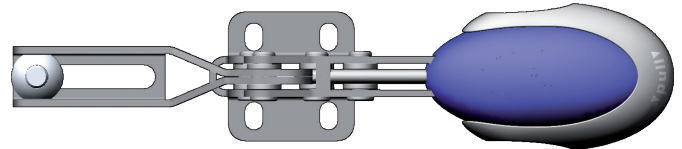
The inner locking system is a completely revolutionary development. Nothing gets caught or stuck. Operation is easy even when wearing work gloves.



### Operating principle of the safety locking mechanism:

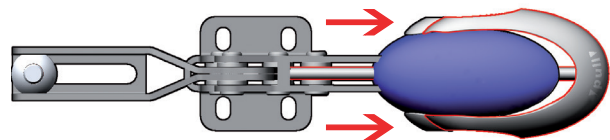
#### Fig. 1:

Locking mechanism closed. Safe to use thanks to revolutionary grip - no pinch points or interfering contours



#### Fig. 2:

Inner rod locking mechanism with automatic safety catch. The lock is released by pulling the grip



#### Fig. 3:

Locking mechanism open.

Release the grip to close the safety mechanism

