

## Reducing bushings

### Item description/product images

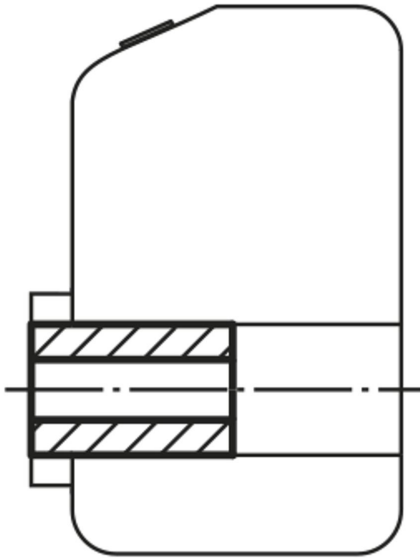


### Description

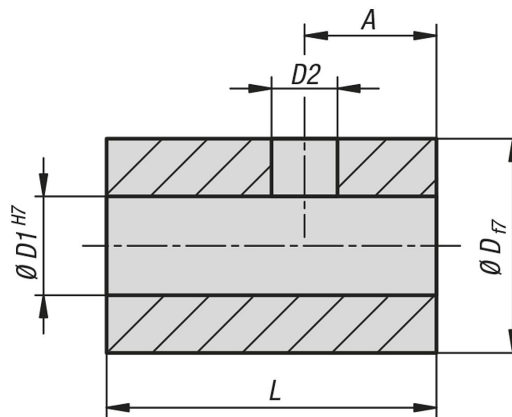
**Material:**  
Steel.

**Version:**  
Black oxidised.

**Note:**  
Reducer bushes are used to change the diameter between position indicator and adjustment spindle.  
The grub screw is supplied.



### Drawings



### Overview of items

#### Reducing bushings

## Reducing bushings

### Overview of items

Order No.	A	D	D1	D2	L	Suitable for
K0412.1006	2,5	10	6	3,2	14	K0408
K0412.1008	2,5	10	8	3,2	14	K0408
K0412.1406	3,5	14	6	4,2	17	K0409, K1928
K0412.1408	3,5	14	8	4,2	17	K0409, K1928
K0412.1410	3,5	14	10	4,2	17	K0409, K1928
K0412.1412	3,5	14	12	4,2	17	K0409, K1928
K0412.2012	4,5	20	12	5,5	20	K0410
K0412.2014	4,5	20	14	5,5	20	K0410
K0412.2016	4,5	20	16	5,5	20	K0410
K0412.2018	4,5	20	18	5,5	20	K0410
K0412.3012	4	30	12	5,5	30	K0411
K0412.3014	4	30	14	5,5	30	K0411
K0412.3016	4	30	16	5,5	30	K0411
K0412.3018	4	30	18	5,5	30	K0411
K0412.3020	4	30	20	5,5	30	K0411
K0412.3025	4	30	25	5,5	30	K0411