

# Shaft collars set screw DIN 705, steel

## Item description/product images



## Description

### Version:

Form A:

Shaft collar bright steel.

Grub screw steel grade 15H, bright.

Form E:

Shaft collar steel, bright or electro zinc-plated, blue passivated.

Grub screw steel grade 45H, bright (black) or electro zinc-plated, blue passivated.

Grub screw stainless steel A2-70, bright.

### Note:

Form A: with DIN 553 grub screw (slit)

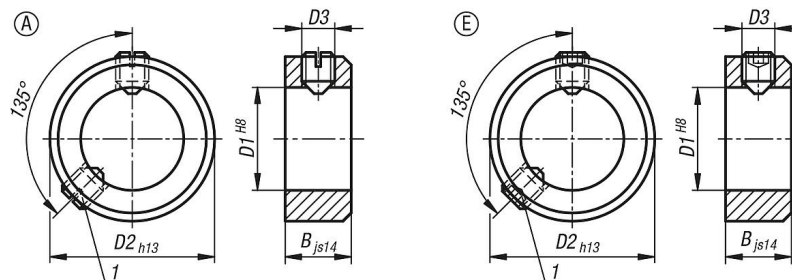
Form E: with DIN EN ISO 4027 grub screw (hex socket)

According to DIN 705, the stated tolerances apply to blank shaft collars. The tolerances cannot be guaranteed for with electro zinc-plated shaft collars. However, this has no influence on the function.

### Drawing reference:

1) Second grub screw from  $D1 \geq 75$

## Drawings



## Overview of items

### Shaft collars set screw DIN 705, steel

Order No.	Component material	Surface finish body	Form	D1	B	D2	D3 grub screw
K0406.100301	steel	bright	A	3	5	7	M2x3
K0406.100401	steel	bright	A	4	5	8	M2,5x3
K0406.100501	steel	bright	A	5	6	10	M3x4
K0406.100601	steel	bright	A	6	8	12	M4x5
K0406.100701	steel	bright	A	7	8	12	M4x5
K0406.100801	steel	bright	A	8	8	16	M4x6
K0406.100901	steel	bright	A	9	10	18	M5x8
K0406.101001	steel	bright	A	10	10	20	M5x8
K0406.101101	steel	bright	A	11	10	20	M5x8
K0406.101201	steel	bright	A	12	12	22	M6x8
K0406.101401	steel	bright	A	14	12	25	M6x8
K0406.101501	steel	bright	A	15	12	25	M6x8
K0406.101601	steel	bright	A	16	12	28	M6x8
K0406.101801	steel	bright	A	18	14	32	M6x8
K0406.102001	steel	bright	A	20	14	32	M6x8
K0406.102401	steel	bright	A	24	16	40	M8x12

## Shaft collars set screw DIN 705, steel

### Overview of items

Order No.	Component material	Surface finish body	Form	D1	B	D2	D3 grub screw
K0406.102501	steel	bright	A	25	16	40	M8x10
K0406.102601	steel	bright	A	26	16	40	M8x10
K0406.102801	steel	bright	A	28	16	45	M8x12
K0406.103001	steel	bright	A	30	16	45	M8x10
K0406.103201	steel	bright	A	32	16	50	M8x12
K0406.103501	steel	bright	A	35	16	56	M8x12
K0406.103601	steel	bright	A	36	16	56	M8x12
K0406.103801	steel	bright	A	38	16	56	M8x12
K0406.104001	steel	bright	A	40	18	63	M10x16
K0406.104201	steel	bright	A	42	18	63	M10x16
K0406.104501	steel	bright	A	45	18	70	M10x16
K0406.104801	steel	bright	A	48	18	70	M10x16
K0406.105001	steel	bright	A	50	18	80	M10x16
K0406.105201	steel	bright	A	52	18	80	M10x16
K0406.105501	steel	bright	A	55	18	80	M10x16
K0406.105601	steel	bright	A	56	18	80	M10x16
K0406.105801	steel	bright	A	58	20	90	M10x16
K0406.106001	steel	bright	A	60	20	90	M10x16
K0406.106301	steel	bright	A	63	20	90	M10x16
K0406.106501	steel	bright	A	65	20	100	M10x20
K0406.106801	steel	bright	A	68	20	100	M10x20
K0406.107001	steel	bright	A	70	20	100	M10x20
K0406.107201	steel	bright	A	72	20	100	M10x20
K0406.107501	steel	bright	A	75	22	110	M12x20
K0406.108001	steel	bright	A	80	22	110	M12x20
K0406.108501	steel	bright	A	85	22	125	M12x25
K0406.109001	steel	bright	A	90	22	125	M12x20
K0406.110001	steel	bright	A	100	25	140	M12x25
K0406.300301	steel	bright	E	3	5	7	M2x3
K0406.300401	steel	bright	E	4	5	8	M2,5x3
K0406.300501	steel	bright	E	5	6	10	M3x4
K0406.300601	steel	bright	E	6	8	12	M4x5
K0406.300701	steel	bright	E	7	8	12	M4x5
K0406.300801	steel	bright	E	8	8	16	M4x6
K0406.300901	steel	bright	E	9	10	18	M5x8
K0406.301001	steel	bright	E	10	10	20	M5x8
K0406.301101	steel	bright	E	11	10	20	M5x8
K0406.301201	steel	bright	E	12	12	22	M6x8
K0406.301401	steel	bright	E	14	12	25	M6x8
K0406.301501	steel	bright	E	15	12	25	M6x8
K0406.301601	steel	bright	E	16	12	28	M6x8
K0406.301801	steel	bright	E	18	14	32	M6x8
K0406.302001	steel	bright	E	20	14	32	M6x8
K0406.302401	steel	bright	E	24	16	40	M8x12
K0406.302501	steel	bright	E	25	16	40	M8x10
K0406.302601	steel	bright	E	26	16	40	M8x10
K0406.302801	steel	bright	E	28	16	45	M8x12
K0406.303001	steel	bright	E	30	16	45	M8x10
K0406.303201	steel	bright	E	32	16	50	M8x12
K0406.303501	steel	bright	E	35	16	56	M8x12
K0406.303601	steel	bright	E	36	16	56	M8x12
K0406.303801	steel	bright	E	38	16	56	M8x12
K0406.304001	steel	bright	E	40	18	63	M10x16
K0406.304201	steel	bright	E	42	18	63	M10x16
K0406.304501	steel	bright	E	45	18	70	M10x16
K0406.304801	steel	bright	E	48	18	70	M10x16
K0406.305001	steel	bright	E	50	18	80	M10x16
K0406.305201	steel	bright	E	52	18	80	M10x16
K0406.305501	steel	bright	E	55	18	80	M10x16
K0406.305601	steel	bright	E	56	18	80	M10x16
K0406.305801	steel	bright	E	58	20	90	M10x16
K0406.306001	steel	bright	E	60	20	90	M10x16

## Shaft collars set screw DIN 705, steel

### Overview of items

Order No.	Component material	Surface finish body	Form	D1	B	D2	D3 grub screw
K0406.306301	steel	bright	E	63	20	90	M10x16
K0406.306501	steel	bright	E	65	20	100	M10x20
K0406.306801	steel	bright	E	68	20	100	M10x20
K0406.307001	steel	bright	E	70	20	100	M10x20
K0406.307201	steel	bright	E	72	20	100	M10x20
K0406.307501	stainless steel A2	bright	E	75	22	110	M12x20
K0406.308001	stainless steel A2	bright	E	80	22	110	M12x20
K0406.308501	stainless steel A2	bright	E	85	22	125	M12x25
K0406.309001	stainless steel A2	bright	E	90	22	125	M12x20
K0406.310001	stainless steel A2	bright	E	100	25	140	M12x25
K0406.300303	steel	galvanized, blue-passivated	E	3	5	7	M2x3
K0406.300403	steel	galvanized, blue-passivated	E	4	5	8	M2,5x3
K0406.300503	steel	galvanized, blue-passivated	E	5	6	10	M3x4
K0406.300603	steel	galvanized, blue-passivated	E	6	8	12	M4x5
K0406.300703	steel	galvanized, blue-passivated	E	7	8	12	M4x5
K0406.300803	steel	galvanized, blue-passivated	E	8	8	16	M4x6
K0406.300903	steel	galvanized, blue-passivated	E	9	10	18	M5x8
K0406.301003	steel	galvanized, blue-passivated	E	10	10	20	M5x8
K0406.301103	steel	galvanized, blue-passivated	E	11	10	20	M5x8
K0406.301203	steel	galvanized, blue-passivated	E	12	12	22	M6x8
K0406.301403	steel	galvanized, blue-passivated	E	14	12	25	M6x8
K0406.301503	steel	galvanized, blue-passivated	E	15	12	25	M6x8
K0406.301603	steel	galvanized, blue-passivated	E	16	12	28	M6x8
K0406.301803	steel	galvanized, blue-passivated	E	18	14	32	M6x8
K0406.302003	steel	galvanized, blue-passivated	E	20	14	32	M6x8
K0406.302403	steel	galvanized, blue-passivated	E	24	16	40	M8x12
K0406.302503	steel	galvanized, blue-passivated	E	25	16	40	M8x10
K0406.302603	steel	galvanized, blue-passivated	E	26	16	40	M8x10
K0406.302803	steel	galvanized, blue-passivated	E	28	16	45	M8x12
K0406.303003	steel	galvanized, blue-passivated	E	30	16	45	M8x10
K0406.303203	steel	galvanized, blue-passivated	E	32	16	50	M8x12
K0406.303503	steel	galvanized, blue-passivated	E	35	16	56	M8x12
K0406.303603	steel	galvanized, blue-passivated	E	36	16	56	M8x12
K0406.303803	steel	galvanized, blue-passivated	E	38	16	56	M8x12
K0406.304003	steel	galvanized, blue-passivated	E	40	18	63	M10x16
K0406.304203	steel	galvanized, blue-passivated	E	42	18	63	M10x16
K0406.304503	steel	galvanized, blue-passivated	E	45	18	70	M10x16
K0406.304803	steel	galvanized, blue-passivated	E	48	18	70	M10x16
K0406.305003	steel	galvanized, blue-passivated	E	50	18	80	M10x16
K0406.305203	steel	galvanized, blue-passivated	E	52	18	80	M10x16
K0406.305503	steel	galvanized, blue-passivated	E	55	18	80	M10x16
K0406.305603	steel	galvanized, blue-passivated	E	56	18	80	M10x16
K0406.305803	steel	galvanized, blue-passivated	E	58	20	90	M10x16
K0406.306003	steel	galvanized, blue-passivated	E	60	20	90	M10x16
K0406.306303	steel	galvanized, blue-passivated	E	63	20	90	M10x16
K0406.306503	steel	galvanized, blue-passivated	E	65	20	100	M10x20
K0406.306803	steel	galvanized, blue-passivated	E	68	20	100	M10x20
K0406.307003	steel	galvanized, blue-passivated	E	70	20	100	M10x20
K0406.307203	steel	galvanized, blue-passivated	E	72	20	100	M10x20
K0406.307503	steel	galvanized, blue-passivated	E	75	22	110	M12x20
K0406.308003	steel	galvanized, blue-passivated	E	80	22	110	M12x20
K0406.308503	steel	galvanized, blue-passivated	E	85	22	125	M12x25
K0406.309003	steel	galvanized, blue-passivated	E	90	22	125	M12x20
K0406.310003	steel	galvanized, blue-passivated	E	100	25	140	M12x25

Information about this article

---