

## Pull handles, oval aluminium with outer hole

### Item description/product images



### Description

#### Material:

Oval aluminium EN AW-6060

#### Version:

Black or ruby red RAL 3003, powder-coated.

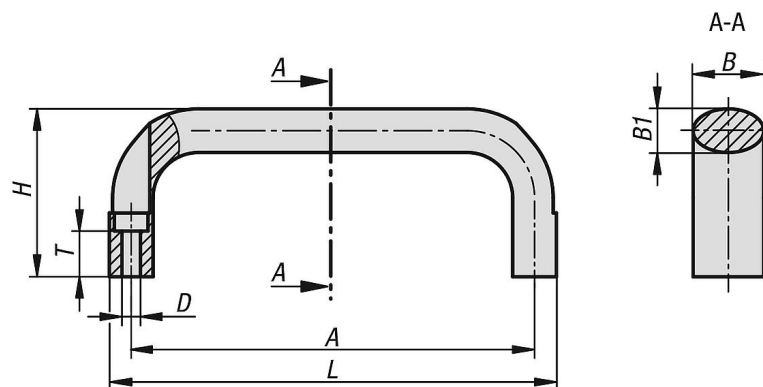
#### Assembly:

From the front.

#### Accessory:

Use ISO 4762-M5/M6 cap screws for mounting the handles.

### Drawings



### Overview of items

Order No.	Main colour	A	B	B1	D	H	L	T	Load capacity N
K0204.11000105	black	100	21	13	5,5	50	113	13,6	1000
K0204.11120105	black	112	21	13	5,5	50	125	13,6	1000
K0204.11120106	black	112	25	17	6,6	55	129	11	1000
K0204.11200105	black	120	21	13	5,5	50	133	13,6	1000
K0204.11200106	black	120	25	17	6,6	55	137	11	1000
K0204.11280105	black	128	21	13	5,5	50	141	13,6	1000
K0204.11280106	black	128	25	17	6,6	55	145	11	1000
K0204.11600105	black	160	21	13	5,5	50	173	13,6	1000
K0204.11600106	black	160	25	17	6,6	55	177	11	1000
K0204.11800106	black	180	25	17	6,6	55	197	11	1000
K0204.11002705	ruby red RAL3003	100	21	13	5,5	50	113	13,6	1000
K0204.11122705	ruby red RAL3003	112	21	13	5,5	50	125	13,6	1000
K0204.11122706	ruby red RAL3003	112	25	17	6,6	55	129	11	1000
K0204.11202705	ruby red RAL3003	120	21	13	5,5	50	133	13,6	1000
K0204.11202706	ruby red RAL3003	120	25	17	6,6	55	137	11	1000
K0204.11282705	ruby red RAL3003	128	21	13	5,5	50	141	13,6	1000
K0204.11282706	ruby red RAL3003	128	25	17	6,6	55	145	11	1000
K0204.11602705	ruby red RAL3003	160	21	13	5,5	50	173	13,6	1000
K0204.11602706	ruby red RAL3003	160	25	17	6,6	55	177	11	1000
K0204.11802706	ruby red RAL3003	180	25	17	6,6	55	197	11	1000

