

## Pins stainless steel for hinge halves

### Item description/product images



### Description

**Material:**

Stainless steel 1.4301.

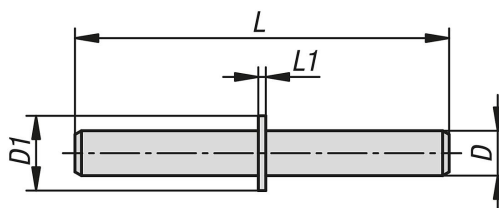
**Version:**

Bright.

**Note:**

Hinge pins for in-frame hinge halves K2102 and on-frame hinge halves K2103.

### Drawings



### Overview of items

#### Pins stainless steel for hinge halves

Order No.	D	D1	L	L1
K2104.06501	6	10	50	1