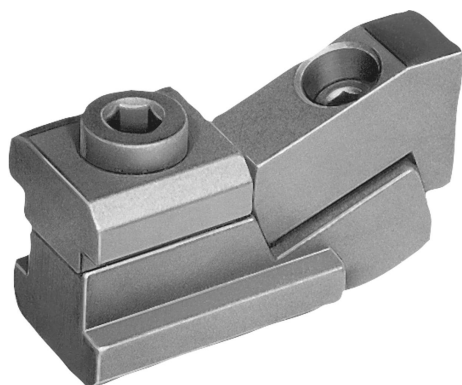


# T-slot clamps

## Item description/product images

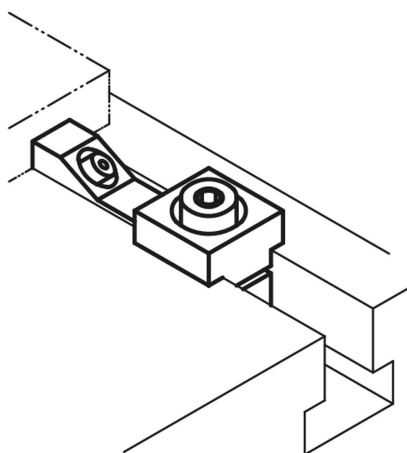


### Description

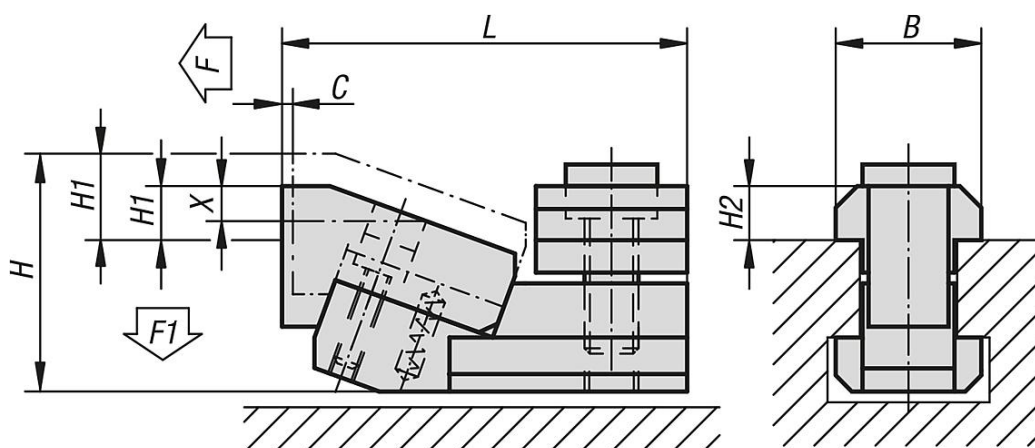
**Material:**  
Steel.

**Version:**  
Hardened, black oxidised.

**Note:**  
These T-slot clamps are especially useful for clamping low profile workpieces. The wedge operated jaws also provide positive down force. Dimensions "H1" and "X" depend on the max. T-slot depth acc. to DIN 650. To achieve the minimal clamping height by the minimal slot depth, the jaw can be ground down by the dimension "X".



## Drawings



## Overview of items

### T-slot clamps

Order No.	Slot width	C	L	B	H	H1 min.	H1 max.	X	H2	F kN	F1 kN
K1230.12	12	1,8	52	18	31	3,5	8,5	5	7	5	0,6

