

Pull clamps automation capable

Item description/product images



Description

Material:

Carbon steel.

Version:

Body black oxidised.

Contact face tempered and ground.

Note:

The repeat accuracy is ± 0.3 mm.

To remove swarf and dust, remove the two cover caps (2) and blow them out with compressed air from above.

Type of operation:

Actuated using a hammer driver with adjustable torque or manually using a clamping key.

Advantages:

Automation-compatible

High clamping forces

Rapid clamping

Supplied with:

Including positioning bush.

Accessory:

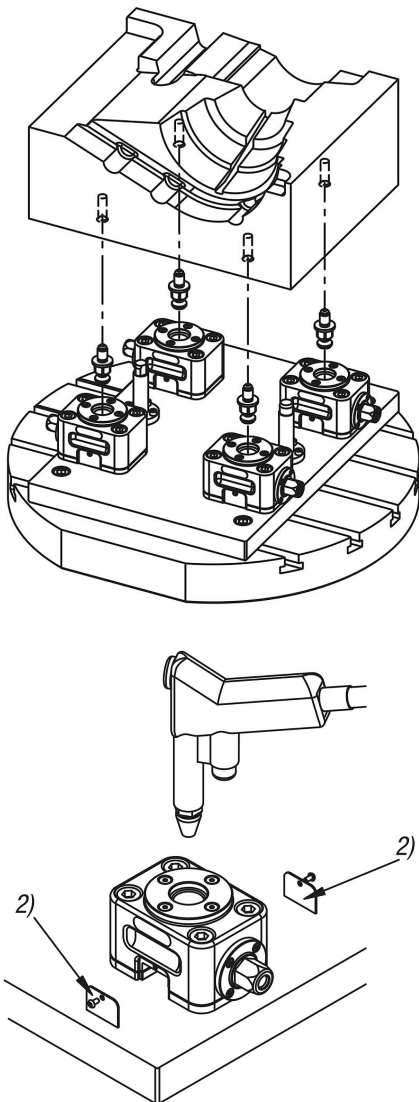
K2210 Clamping screw for automation capable pull clamps

K2212 Extension unit.

Drawing reference:

1) Positioning bushes

2) cover cap

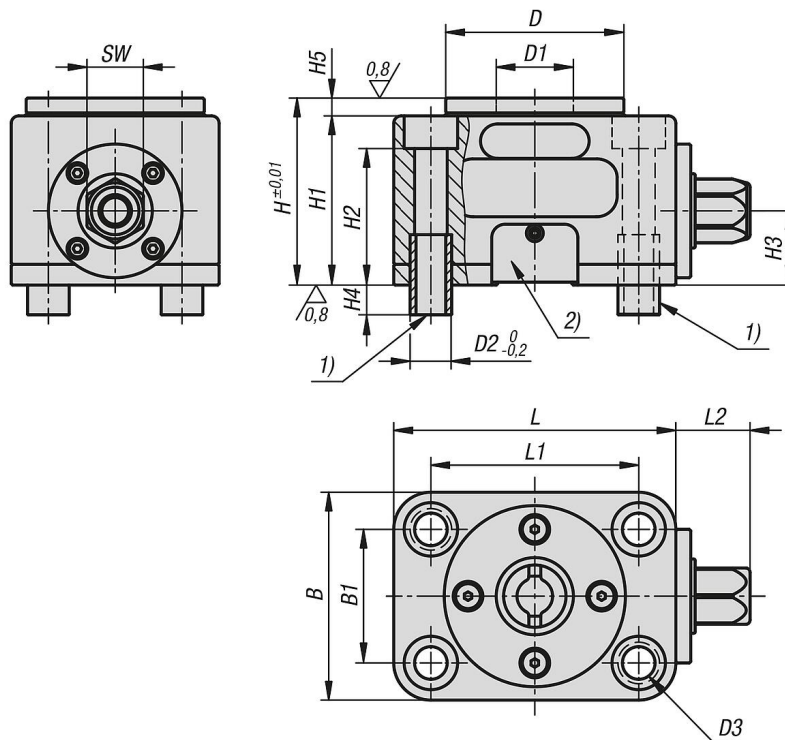


Pull clamps automation capable

Item description/product images



Drawings



Overview of items

Pull clamps, automation capable

Order No.	B	B1	D	D1	D2	D3 for screw to DIN 912	H	H1	H2	H3	H4	H5	L	L1	L2	SW	Tightening torque max. Nm	Clamping force kN
K2209.12070095	70	45	60	26	14	M10	63	57	46	25	10	6	95	70	25	19	40	12

