

Tooling blocks

Item description/product images



Description

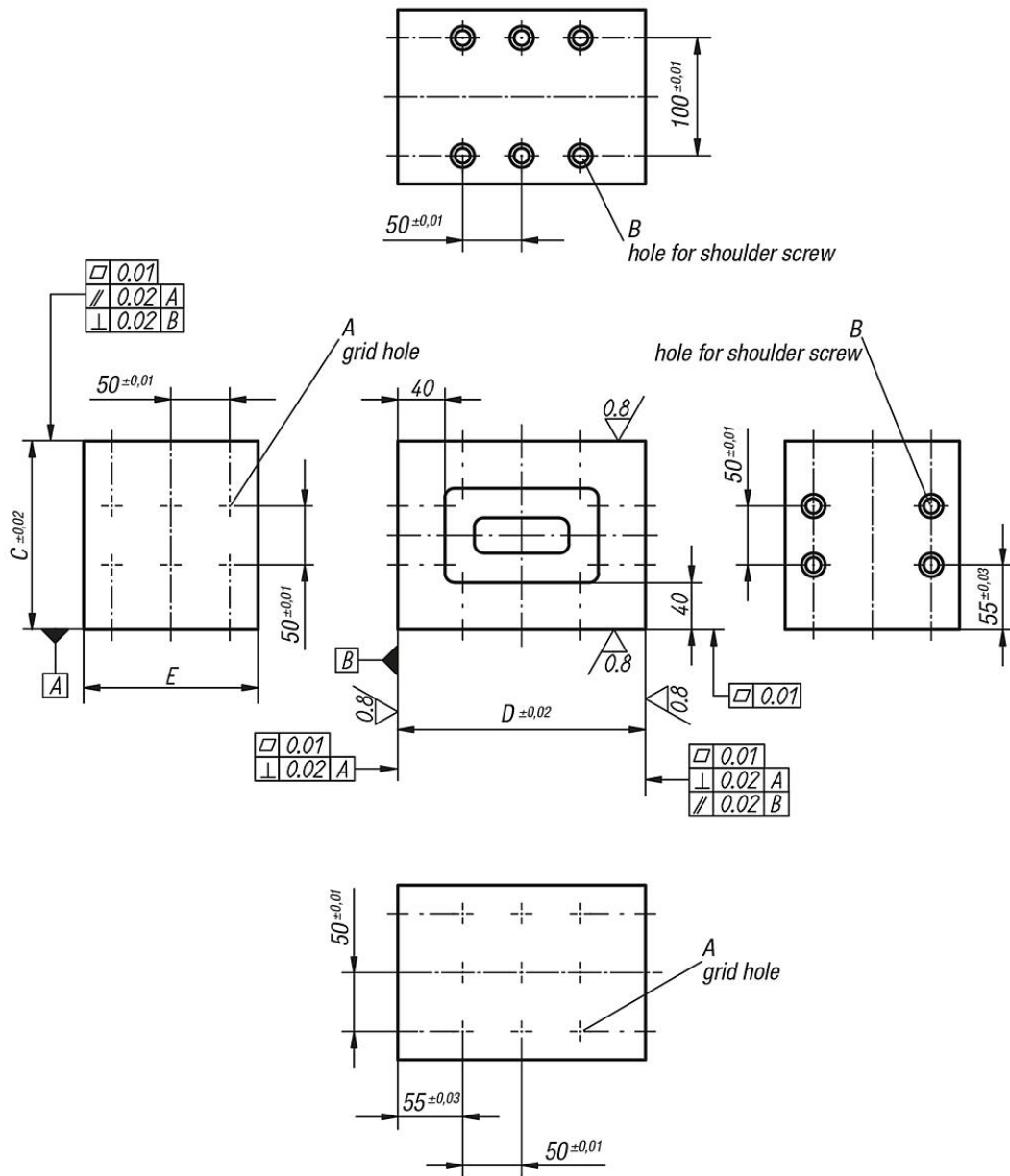
Material:
GJL 300.

Version:
Support and mounting surfaces ground

Note:
Grid hole pitch $50 \pm 0,01$ mm.
Tooling blocks can be used for mounting low workpieces or as small bases. They can also be used as parallel gauge blocks for inspection work.
Tooling blocks K0809.090121621 and K0809.090122126 mounted with shoulder screws K0815.112065.
Tooling blocks K0809.090161621 and K0809.090162126 mounted with shoulder screws K0815.16075.

Tooling blocks

Drawings



Overview of items