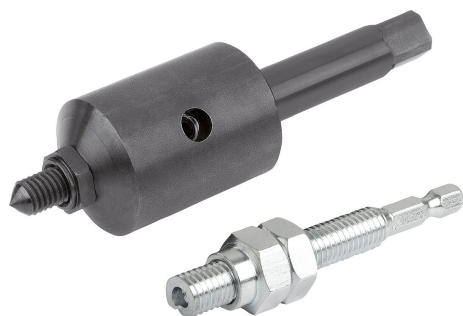


## Assembly tools for self-tapping threaded inserts

### Item description/product images



### Description

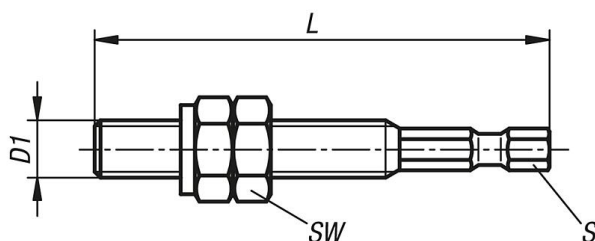
**Material:**  
Steel.

**Version:**  
Hand assembly tool, electro zinc-plated.  
Machine assembly tool, black oxidised.

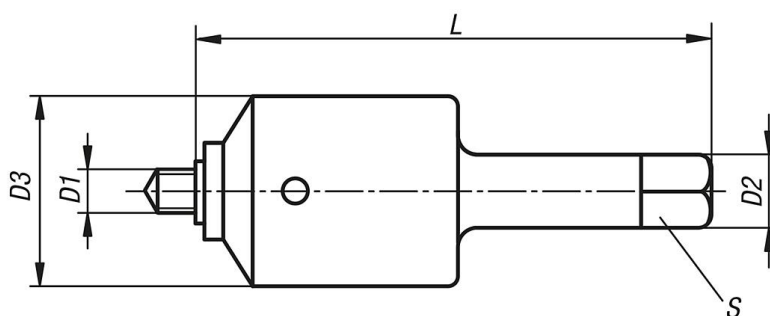
**Note:**  
The turning in by hand is carried out with the manual assembly tool and a cordless screwdriver, ratchet, socket etc. Machine assembly is carried out with the machine assembly tool preferably on a thread-cutting machine.

### Drawings

Hand assembly tool



Machine assembly tool



### Overview of items

Order No.	Version 1	D1 internal thread	D2	D3	L length	S	SW	Insertion torque ref. values Nm	RPM ref. values for light metal
K0978.803	manual operation	M3	-	-	46	1/4	5,5	2,5	-
K0978.804	manual operation	M4	-	-	48	1/4	7	5,5	-
K0978.805	manual operation	M5	-	-	57	1/4	8	10	-
K0978.806	manual operation	M6	-	-	62	1/4	10	15	-
K0978.808	manual operation	M8	-	-	72	1/4	13	28	-
K0978.810	manual operation	M10	-	-	82	1/4	17	40	-

## Assembly tools for self-tapping threaded inserts

### Overview of items

Order No.	Version 1	D1 internal thread	D2	D3	L length	S	SW	Insertion torque ref. values Nm	RPM ref. values for light metal
<b>K0978.812</b>	manual operation	M12	-	-	92	1/4	19	60	-
<b>K0978.903</b>	machine type	M3	8	18	80	6	-	2,5	650 - 900
<b>K0978.904</b>	machine type	M4	8	18	80	6	-	5,5	400 - 600
<b>K0978.905</b>	machine type	M5	12,5	30	96,5	10	-	10	400 - 600
<b>K0978.906</b>	machine type	M6	12,5	30	96,5	10	-	15	280 - 400
<b>K0978.908</b>	machine type	M8	12,5	30	96,5	10	-	28	280 - 400
<b>K0978.910</b>	machine type	M10	13	40	110	10	-	40	200 - 300
<b>K0978.912</b>	machine type	M12	13	40	110	10	-	60	200 - 300
<b>K0978.916</b>	machine type	M16	13	40	110	10	-	160	150 - 200